



FLORIDA'S STRATEGIC INTERMODAL SYSTEM (SIS)

March 2017

Chris Edmonston SIS Planning Manager
Florida Department of Transportation Systems Planning Office

Three Sets of Decision Rules

Which facilities are of statewide significance?

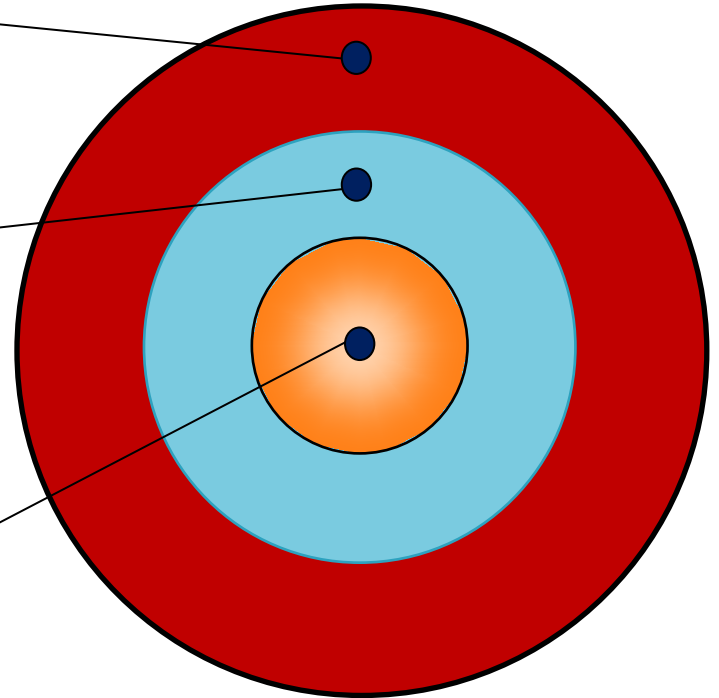
Designation Criteria

What investments are needed, and which needs are eligible for SIS and Emerging SIS funding?

Needs Policies, including Eligibility Criteria

Which projects will be funded given available resources?

Prioritization Process



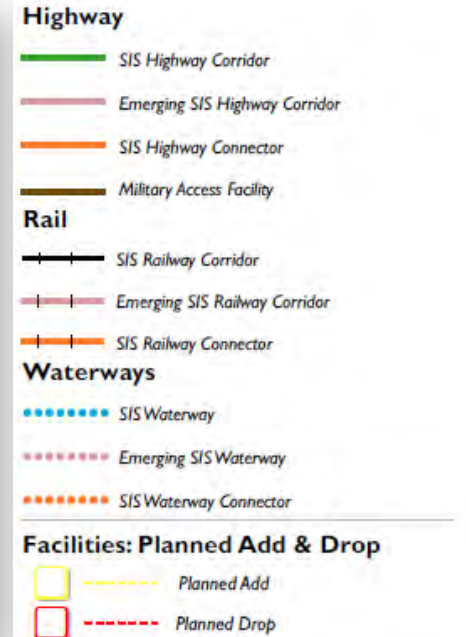
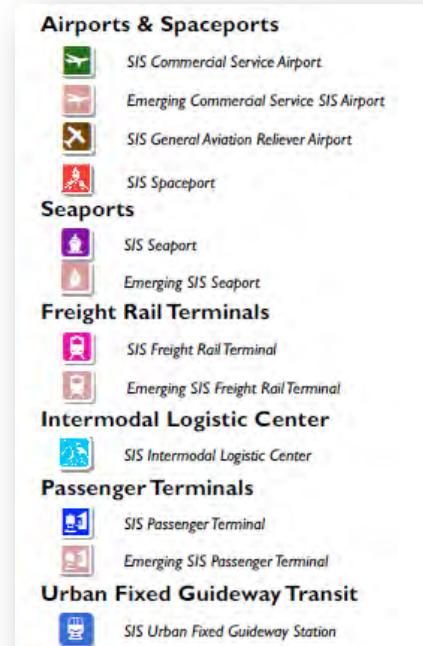
SIS Designation Criteria

- Florida Transportation Plan
- Strategic Intermodal Systems (SIS) Policy Plan
- Designation Criteria and Thresholds Guidance
- Designation Change Requests (DCR)
- Enterprise Strategic Intermodal System (eSIS) Tool

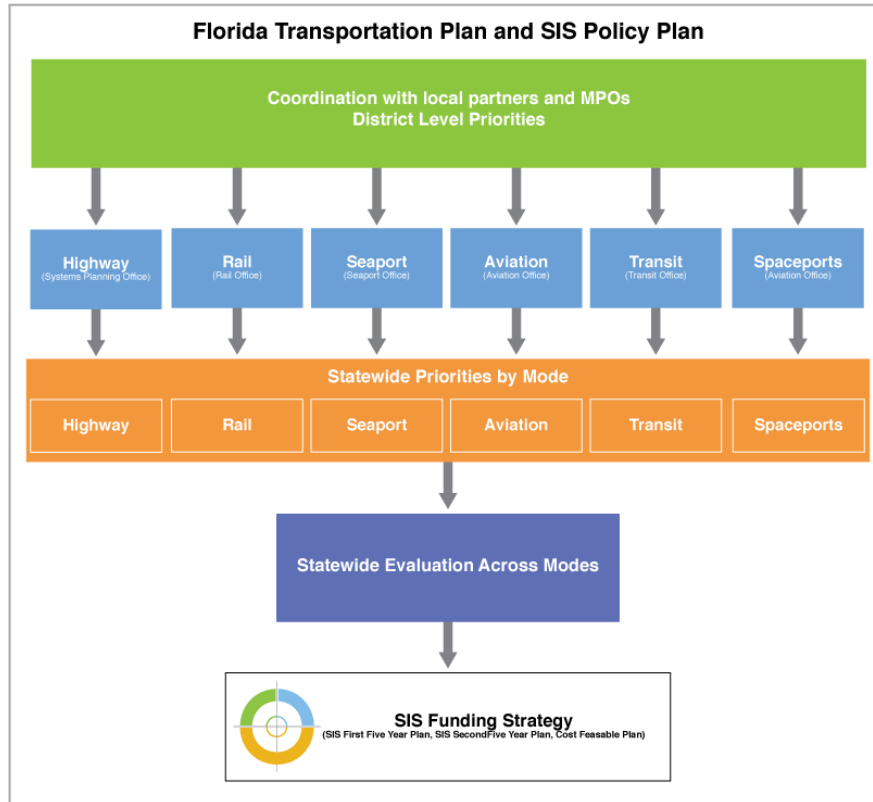


Total SIS Designations

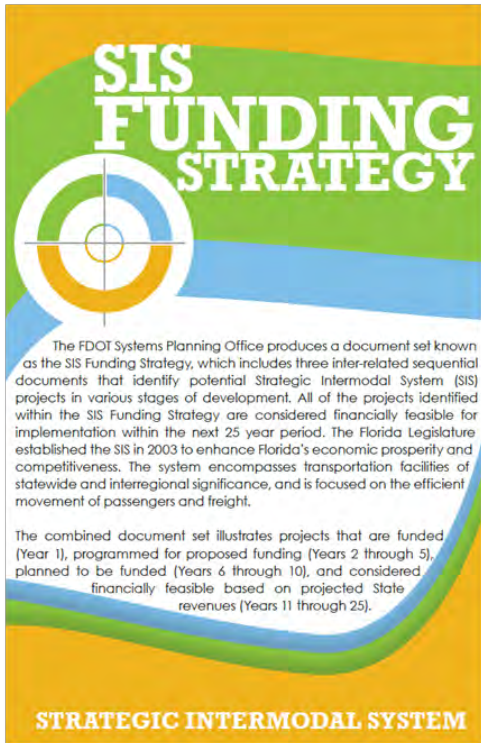
- SIS Airports: 20
- SIS Spaceports: 2
- SIS Seaports: 12
- SIS Intermodal Logistic Center: 1
- SIS Freight Terminals: 8
- SIS Passenger Terminals: 20
- SIS Urban Fixed Guideway Stations: 36
- SIS Highway Miles: 4830
- SIS Railroad Miles: 2325
- SIS Waterway Miles: 1986



SIS Funding Strategy - Coordination



SIS Funding Strategy



- ❑ SIS 10-Year Plan
 - First Five-Year Plan (Work Program)
 - Second Five-Year Plan
- ❑ SIS Cost Feasible Plan (Years 11-25)
- ❑ SIS Unfunded Needs Plan



SIS Statewide Project Prioritization

- *MPO/District Priorities*
- *Consideration of Critical Issues*
- *Available Funding vs. Project Costs*
- *Production Schedule*
- *Continuation of Project Phasing*
- *System Connectivity*
- *SIT and Other Analysis Tools*
- *Senior Management/Executive Guidance*

Systems Planning Office
and
Work Program

SIS Strategic Investment Tool (SIT)



- ❑ Created for SIS highways and road connectors only
- ❑ Automated online tool
- ❑ Utilizing FDOT, US Census Bureau data
- ❑ Individual measures representing 6 goals of Florida Transportation Plan



Statewide SIS Work Program Development



- SIS Tentative Work Program – Highway
- SIS Tentative Work Program – Modal
- SIS 2nd Five Year Plan

Questions?



Chris Edmonston, AICP
SIS Planning Manager

Florida DOT - Systems Planning Office
605 Suwannee Street, MS 19
Tallahassee, Florida 32399-0450

850.414.4813
chris.edmonston@dot.state.fl.us