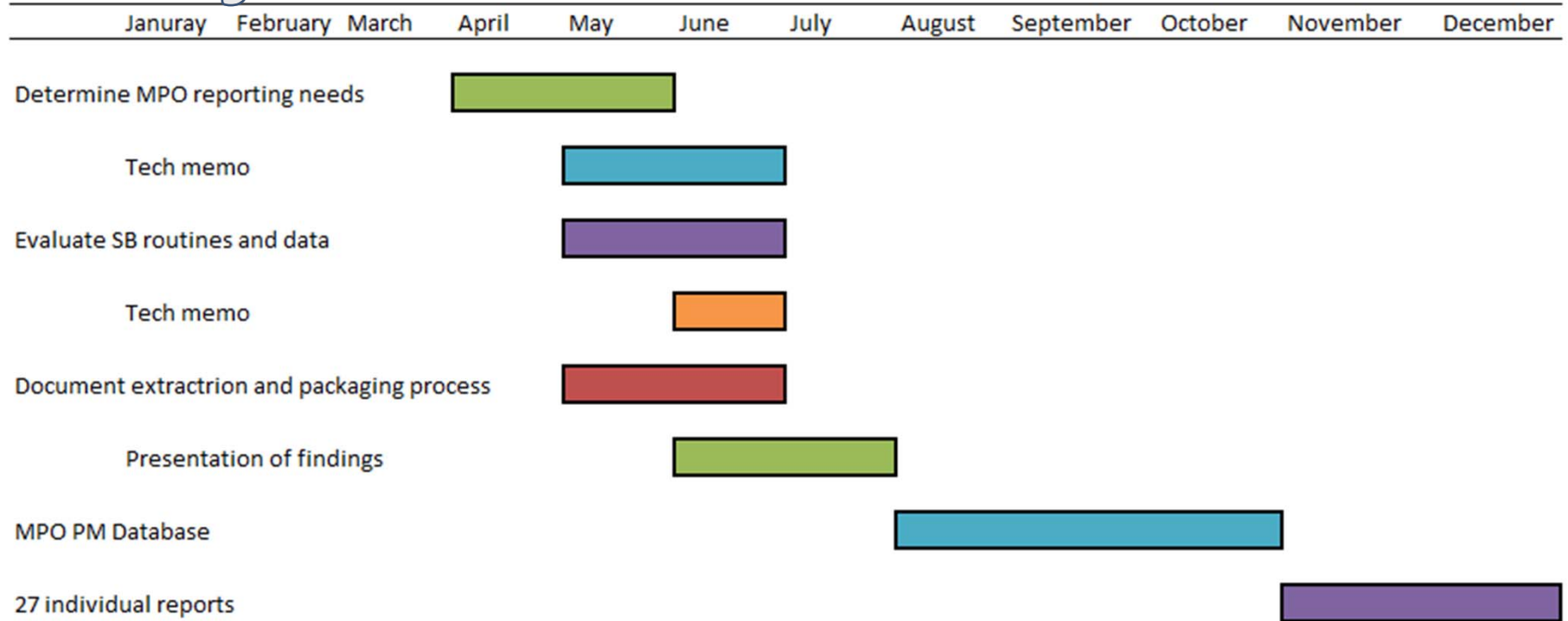




MPO Performance Reports

Florida DOT
July 13, 2017

Project Timeline



Survey

19 MPOs responded to the survey



Survey Responses

Ranking	Mobility Performance Measure	High	Medium	Low	Weighted Score
1	Vehicle Miles Traveled (VMT)	18	1	1	94
2	Travel Time Reliability	14	7	0	91
2	Percent Travel Heavily Congested	15	5	1	91
2	Percent Miles Heavily Congested	15	5	1	91
2	Percent Sidewalk Coverage	16	3	2	91
6	Travel Time Variability	14	5	2	87
7	Percent Bike Lane/Shoulder Coverage	14	4	2	84
8	Hours Heavily Congested	12	7	2	83
9	Truck Miles Traveled	10	10	1	81
10	Percent Travel Meeting LOS Criteria	9	8	4	73
10	Travel Time Reliability (trucks only)	8	11	0	73
12	Person Miles Traveled (PMT)	8	10	2	72
13	Percent Miles Meeting LOS Criteria	8	8	5	69
14	Combination Truck Hours of Delay	6	11	4	67
14	Pedestrian LOS	8	7	6	67
16	Combination Truck Miles Traveled	6	10	5	65
17	Vehicles per Lane Mile	8	6	6	64
18	Combination Truck Average Travel Speed	4	13	4	63
18	Bicycle LOS	6	9	6	63
20	Travel Time Variability (trucks only)	6	9	5	62
21	Aviation Emplanements	3	7	11	47
22	Aviation Departure Reliability	3	6	12	45
23	Aviation Tonnage	1	7	13	39



All Measures

Vehicle Miles Traveled (VMT)
Person Miles Traveled (PMT)
Truck Miles Traveled (TMT)
Percent Travel Meeting LOS Criteria
Travel Time Reliability
Travel Time Reliability (trucks only)
Travel Time Variability
Vehicle Hours of Delay
Average Travel Speed
Average Job Accessibility by Car
Average Job Accessibility by Transit
Percent Sidewalk Coverage
Percent Bike/Lane Coverage
Percent Miles Heavily Congested

Core Measures

Vehicle Miles Traveled (VMT)
Vehicle Hours of Delay
Percent Miles Heavily Congested
Travel Time Reliability
Travel Time Variability
Truck Miles Traveled

Supplementary Measures

Average Job Accessibility by Car
Average Job Accessibility by Transit
Percent Sidewalk Coverage
Percent Bike/Lane Coverage



Average Job Accessibility
within 30 Minute Car Trip

1.1 Million
Jobs

Average Job Accessibility
within 30 Minute Transit Trip

8,923
Jobs

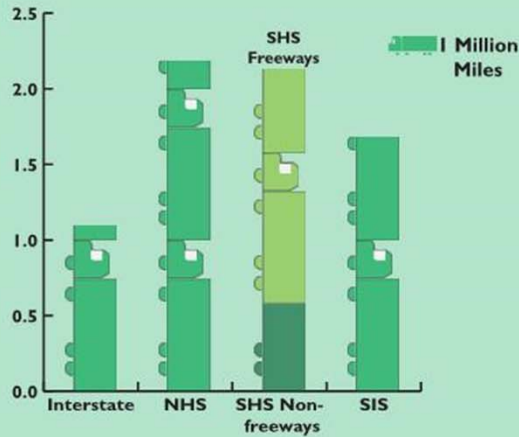
Percent Sidewalk
Coverage

92.5%

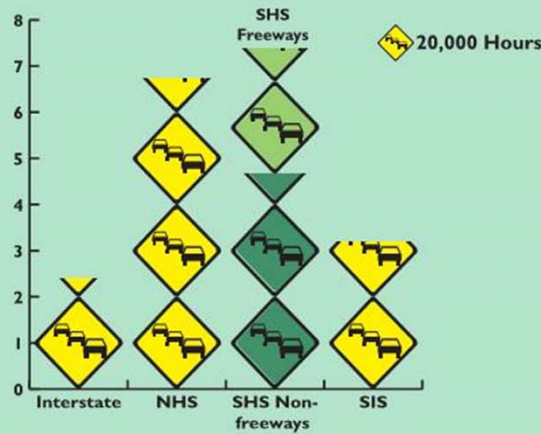
Percent Bicycle Lane
Coverage

39.9%

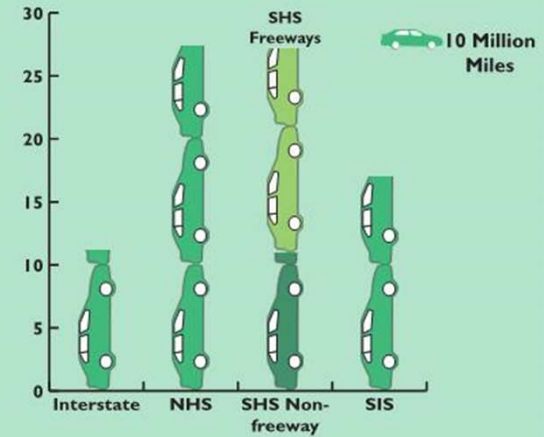
Truck Miles Traveled (per Million Daily)



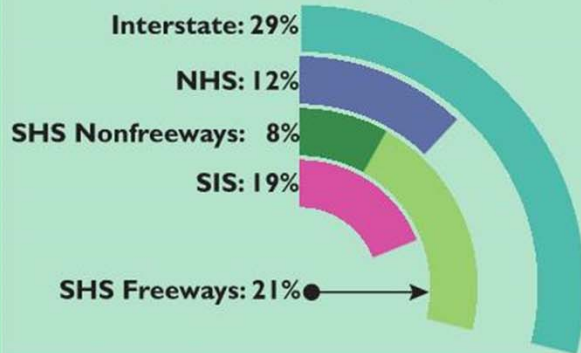
Daily Delay (per 10,000 Hours)



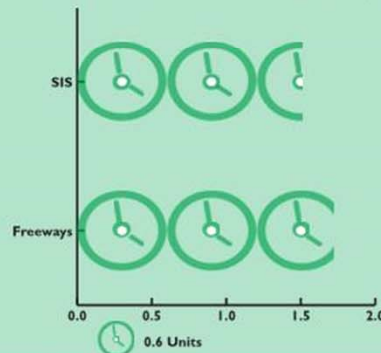
Vehicle Miles Traveled (per Million Daily)



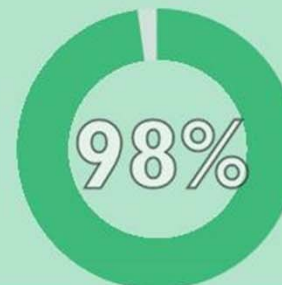
Percent Miles Heavily Congested



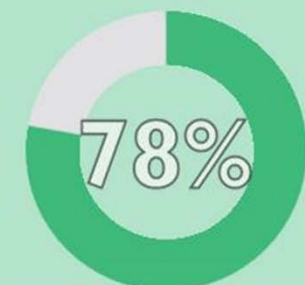
Travel Time Variability



Travel Time
Reliability: SIS



Travel Time
Reliability: Freeways



Definitions

- **Vehicle miles traveled:** A measure of the quantity of vehicle travel, produced by multiplying vehicle volumes by segment length
- **Truck miles traveled:** A measure of the quantity of truck travel, produced by multiplying truck volumes by segment length
- **Vehicle hours of delay:** A measure of the quality of vehicle travel, delay is the product of directional hourly volume and the difference between travel time at “threshold” speeds and travel time at the average speed; the thresholds are based on LOS B as defined by FDOT
- **Percent miles heavily congested:** A measure of how much of the system is being used, the percentage of miles heavily congested is determined by summing the miles of roadway operating at LOS F in the peak hour and then dividing by the total highway miles
- **Average job accessibility by transit:** A measure of the ease in engaging activities, the number of jobs accessible by transit within a 40 minute commute
- **Average job accessibility by automobile:** A measure of the ease in engaging activities, the number of jobs accessible by automobile within a 30 minute commute
- **Percent sidewalk coverage:** A measure of the ease in engaging activities, the percentage of centerline miles of SHS (non-freeway) facilities in urban areas (5,000+ population) that have sidewalks and/or shared pathways available to pedestrians
- **Percent bike lane coverage:** A measure of the ease in engaging activities, the percentage of centerline miles of SHS (non-freeway) facilities that have bike lanes, paved shoulders, or shared pathways available to bicyclists. It may be designated or undesignated

