



RAIL FREIGHT AND THE COMMONWEALTH'S ECONOMY

Investing in Pennsylvania's Future



A presentation by Whitehouse Group

PennDOT in Action

Pennsylvania invests millions of dollars in its rail freight system by managing two competitive grant programs: the **Rail Freight Assistance Program (RFAP)** and **Rail Transportation Assistance Program (RTAP)**. Thus far, the grant program has:

**OVER \$5
BILLION**
AUTHORIZED SINCE
THE INCEPTION OF
THE PROGRAMS

PROVIDING
SUPPORT TO
**OPERATING
RAILROADS**

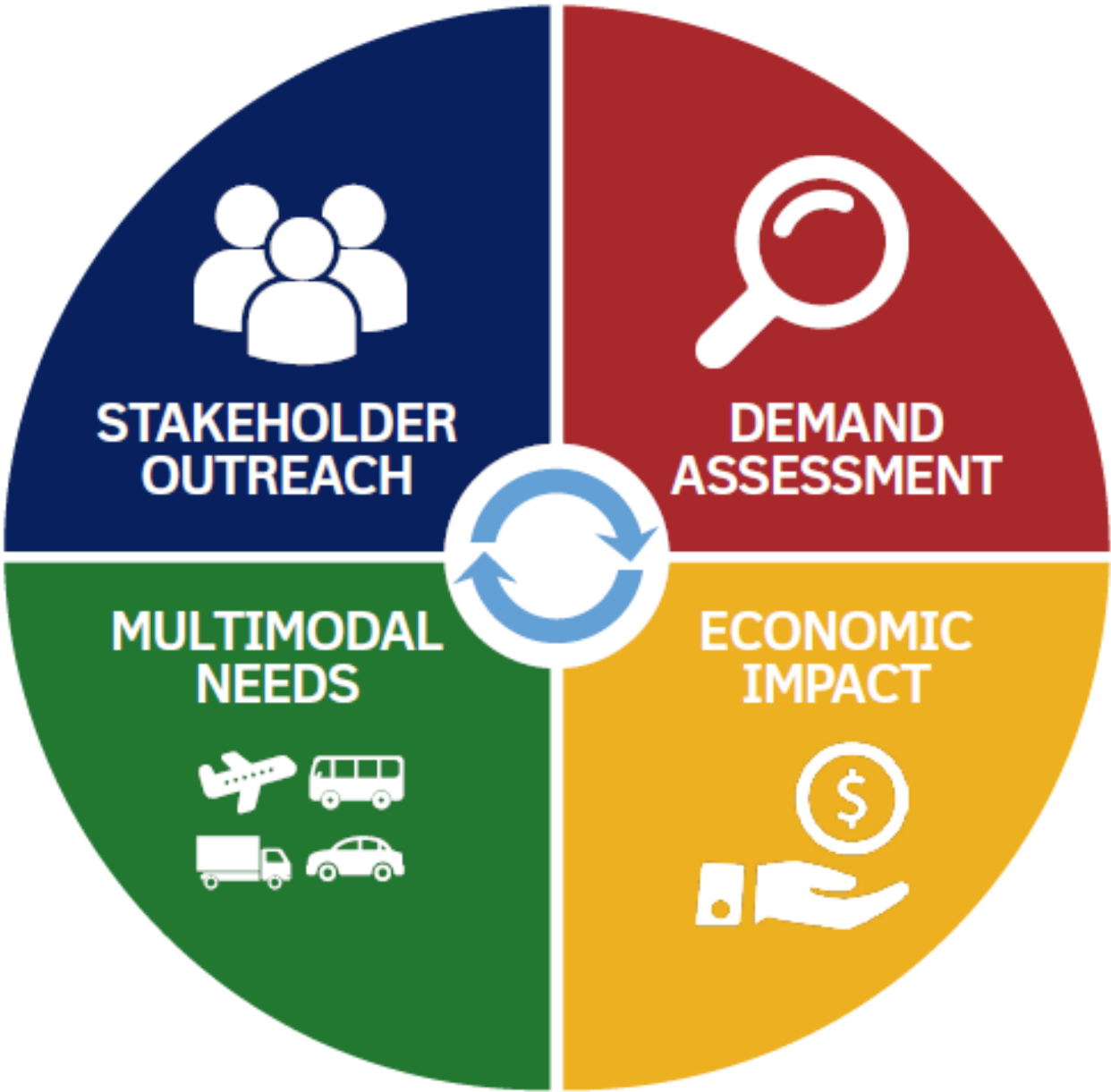


64
TOTAL

RFAP & RTAP
AWARDED
250+ PROJECTS
\$200 MILLION
between
2009 and **2017**

in **2017** **34** RAIL PROJECTS APPROVED
5 RTAP PROJECTS COMPLETED (23 TRACK MILES IMPROVED/ADDED)
8 RFAP PROJECTS COMPLETED (19 TRACK MILES IMPROVED/ADDED)

Project Identification Process



Compared projects with commodity flow data representing existing and forecast demand over the next 10-years.

- Found that the projects support many of Pennsylvania's Targeted Industries of Economic Growth and Keystone Opportunity Zones

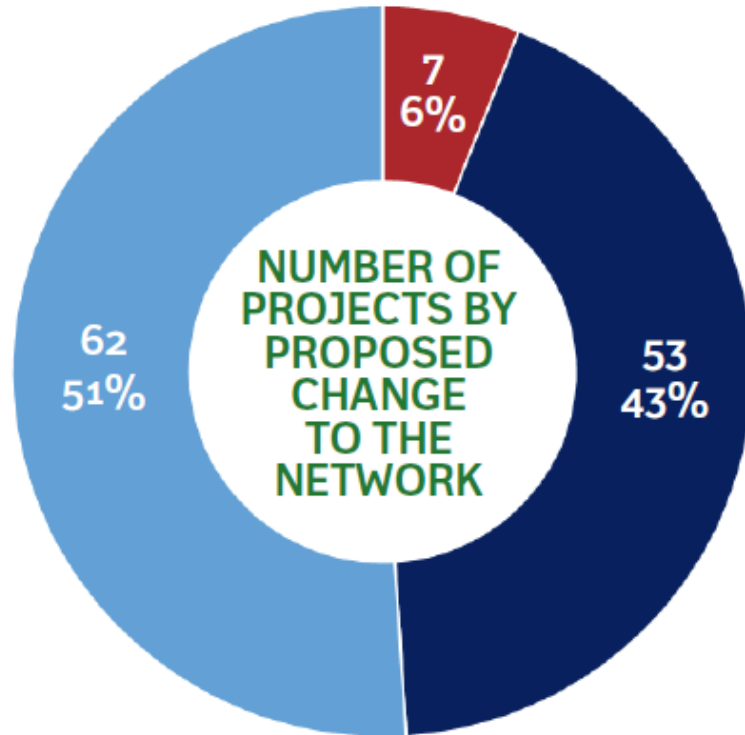


Analyzed project locations to determine their proximity to existing and emerging rail-related industries and economic centers.

- Projects could create over 1,700 new jobs
- Projects could help retain over 1,100 jobs

Projects Identification & Characteristics

122 Projects identified on 37 railroads in 42 counties



CREATES SERVICE

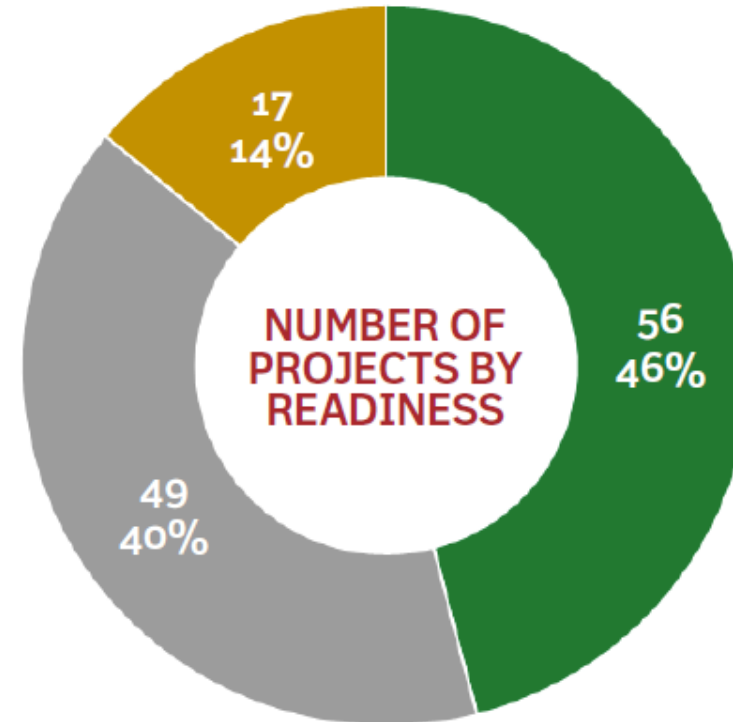
Projects that bring in new customers or build new rail freight connections

IMPROVES SERVICE

Projects that upgrade or rehabilitate rail lines to improve service to existing customers

MAINTAINS SERVICE

Projects that bring the rail infrastructure into a state of good repair



READY-TO-GO

Projects that have a clear purpose and need, completed engineering and design, and minimal permitting requirements

ALMOST READY

Projects that meet the majority of “Ready-To-Go” criteria but are missing one or more of the criteria

CONCEPT

Projects that are needed but are still in early stages of project development

Ensuring Economic Competitiveness

Rail freight is essential to maintaining economic competitiveness and sustainable growth. Projects that create, improve, or maintain service along the rail freight network support the State's economic welfare and vitality by creating jobs, reducing costs, increasing flexibility of inland transportation, and increasing capacity.

